

P THE LODGE AT PINE CREEK



Baytown's Favorite Resort-Style
Senior Living Neighborhood



If it weren't for received ideas, the publishing industry wouldn't have any ideas at all.

DONALD E. WESTLAKE



Complimentary Publications for Senior Care Communities

Senior living guides to aid in transition & lifestyle:

A complimentary publishing service for senior living communities, and services, that provide;

SENIOR LIVING COMMUNITIES



LUXURY RETIREMENT VILLAGES



INDEPENDENT & ASSISTED



ACTIVE ADULT COMMUNITIES



IN-HOME CARE PROVIDERS



HEALTHCARE SERVICES (PACE)



Contact us today to discuss your publication

+1 (626) 349 1544

ELDERBERRY PUBLISHING.COM

media.services@elderberrypublishing.com



WELCOME TO THE LODGE AT PINE CREEK

Enjoy life with All of the Fun,
None of the Chores

Nestled on a picturesque 17-acre estate in Baytown, Texas, The Lodge at Pine Creek is a spectacular senior living community that offers an array of living options to complement your unique lifestyle. Whether you're seeking independent living, assisted living, or memory care, we have the ideal choice for you.

We provide worry-free living in our comfortable and inviting apartments. Our residents are able to maintain their independence and enjoy all the incredible amenities and services The Lodge at Pine Creek has to offer.



CONTENTS

THE LODGE AT PINE CREEK

THE LODGE AT PINE CREEK

- 03 Welcome to The Lodge at Pine Creek
- 05 Living Options for Every Need
- 06 Services & Amenities
- 09 Dining Options
- 10 Independent Living
Cottages & Apartments
- 12 Floor Plans: Cottage Living
- 14 Floor Plans: Independent Living
- 18 Assisted Living
- 20 Floor Plans: Assisted Living
- 22 Memory Care
- 24 Floor Plans: Memory Care



ELDER LIVING GUIDE

- 26 Easing the Transition to Retirement
- 28 The Signs its Time for Care
- 30 Elder Care in the Community
- 32 Insight to Hospice Care
- 35 A Different Kind of Care
- 36 10 Tips for Healthy Aging
- 38 Age Related Hearing Loss
- 42 Dental Care in Aging
- 44 Elder Law Meets Senior Care
- 46 Selling Your Home Prior to Making
the Transition
- 50 10 Tips to Help Caregivers Stay
in the Moment
- 51 Lets Make Some Notes

THE LODGE AT PINE CREEK

346-233-0479
825 Hunt Road
Baytown, TX 77521

LODGEATPINECREEK.COM



This marketing publication has been produced in print and eBook by Elderberry Publishing, with an approach to publishing and design whereby text and content is made available in alternative formats and designed to aid in the reading process.

LIVING OPTIONS FOR EVERY NEED

When it comes time to choose a new home for yourself or an aging loved one, it is important to find a community with proper care and services for your unique needs. We offer a spectrum of living options in order to better meet the needs of our residents. These include:

ASSISTED LIVING

Personalized plans of care and health oversight to meet each resident's needs. Our staff will adapt this plan along their journey.

MEMORY CARE

Within a secure environment, residents are free to explore and choose their own activities to encourage independence and preserve dignity.

INDEPENDENT LIVING

A maintenance-free lifestyle for seniors who are able to live on their own, but want the convenience of living within a community with amenities.

COTTAGE LIVING

Active seniors will enjoy our independent cottages that offer the feel of a separated home just steps away from socially engaging community life.

*The right care and the best you is waiting right here at
The Lodge at Pine Creek.*



SERVICES & AMENITIES

The Lodge at Pine Creek is proud to offer a variety of senior living options for active seniors who are looking for "All of the Fun with None of the Chores"! Our top of the line amenities create a rich and rewarding social culture, all located on our intricately landscaped 20 acre master planned community.

Keep up with your fitness routine at our state-of-the-art fitness center, featuring an indoor pool and a yoga studio. Maid and cleaning services are available on a monthly basis, freeing up time for you to take in a movie at the theater, or catch up with friends over at our restaurant. At The Lodge at Pine Creek, we know pets are part of the family—our lakeside walking paths offer the perfect setting to enjoy a stroll with your furry friend.



The Lodge at Pine Creek offers a fulfilling lifestyle for its residents with exceptional services & amenities.

Flexible Meal Plans: At The Lodge at Pine Creek, we offer a variety of flexible meal plans tailored to your specific living options, ensuring freshly prepared cuisine served at the dining venue of your choice.

Diverse Social Activities: Participate in a variety of outings, social events, and group meetings to cultivate connections and a sense of camaraderie.

Fitness Options: Maintain your active and healthy lifestyle with a choice of fitness options, whether you favor yoga, tai chi, or becoming a member of our walking club.

Stress-Free Living: Let us manage the everyday tasks, giving you the freedom to relish all that The Lodge at Pine Creek has to offer.



AMENITIES INCLUDE:

- Movie Theatres
- Dining Room
- Indoor/Outdoor Swimming Pool*
- Activity Rooms
- Fitness Centers/Yoga Studio
- Full Service Salons
- Chapel
- Bistro / Lounge*
- Fishing Pond
- Water Front Views*
- Emergency Pendants*
- General Store*
- Dog Walking Paths
- Game Room with Billiards and Shuffleboard
- Walk-In Closets
- Gourmet Kitchen with Stainless Steel Appliance Packages*
- Maid and Cleaning Services
- Transportation
- Garages / Storage*
- 24-hour Care*
- Porch/Patios*
- Wellness Center (Includes Therapy Services)*
- Wifi
- Plus more!



*At The Lodge at Pine Creek,
a rich and fulfilling life is
waiting for you just outside
your front door.*

*Availability may vary by community or neighborhood

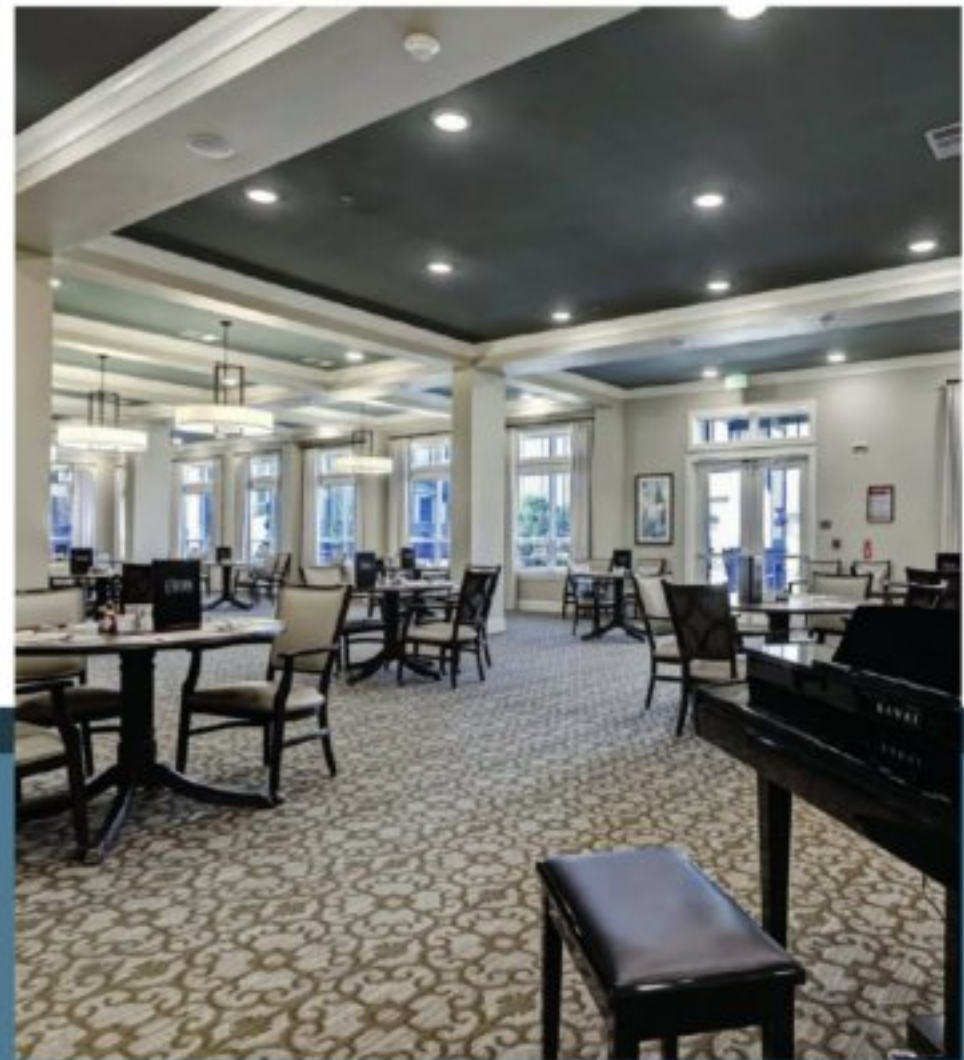


DINING OPTIONS

to Suit Your Mood & Taste

At The Lodge at Pine Creek, we offer a variety of flexible meal plans tailored to your specific living options, ensuring freshly prepared cuisine served at the dining venue of your choice.

- Our full-service dining room, equipped with a restaurant-level kitchen, offers a perfect setting for social dining. Additionally, we provide the option of a private dining room for a more intimate experience.
- For casual, anytime social dining, our bistro is a welcoming choice.
- If residents prefer to savor their meals in the comfort of their own homes at The Lodge at Pine Creek, in-home dining is available.
- When the weather permits, you can relish your meals outdoors in our stunning courtyard, creating a delightful al fresco dining experience.



“I have been here a little over two years now and couldn’t be happier. Everything is kept clean and neat. The food is outstanding and the activities are good. The staff are so polite and nice. Love living here.”

WINONA - RESIDENT

INDEPENDENT LIVING COTTAGES & APARTMENTS

Our Independent Living Cottages offer the ultimate independent living experience for active seniors. Enjoy your private, maintenance-free home with high-end features like vaulted ceilings, private patios, and a private 2-car garage with ample space for relaxing and entertaining. Our gourmet kitchens offer a full appliance package, perfect for preparing a quiet dinner for two, or hosting your family for the holidays. Spacious two- and three-bedroom floor plans are available. The Lodge at Pine Creek cottages aren't simply a residence, they are a home.

The Lodge at Pine Creek's Independent Living Apartments offer an active and social independent living experience for seniors. Our apartments are designed so that you can continue to enjoy the highest quality of life while engaging with friends, family, and the countless activities just outside your door. Private one- and two-bedroom floorplans are available, each featuring a full kitchen.





INCLUDED SERVICES

LIFESTYLE SERVICES

- Bi-Weekly Housekeeping
- Your Choice Dining (Meal Package Available)
- Scheduled Group and Private Transportation Available
- Regularly Scheduled Activities & Events
- Access to all Community Amenities and Services

PERSONAL SERVICES

- Maintenance-Free Living
- 24-HR Emergency Alert System
- On-Site Staff, 24-Hours a Day
- Personal Assistance Services
- Rehabilitation Services

UNIT AMENITIES

- Private Entrance with Attached 2-car Garage
- Fully Equipped Kitchen with Stainless Steel Appliances
- Water & Gas Utilities Included
- Private Patios with Lake View
- Full-Size Washer and Dryer connections
- Full-Size Laundry Rooms
- Spacious Walk-in Closets
- Pet Friendly



FLOOR PLANS

Cottage Living

COTTAGE A

Two Bedroom, Two Bath
With Study
1,450 Sq. Ft.



FLOOR PLANS

Independent Living

A-2

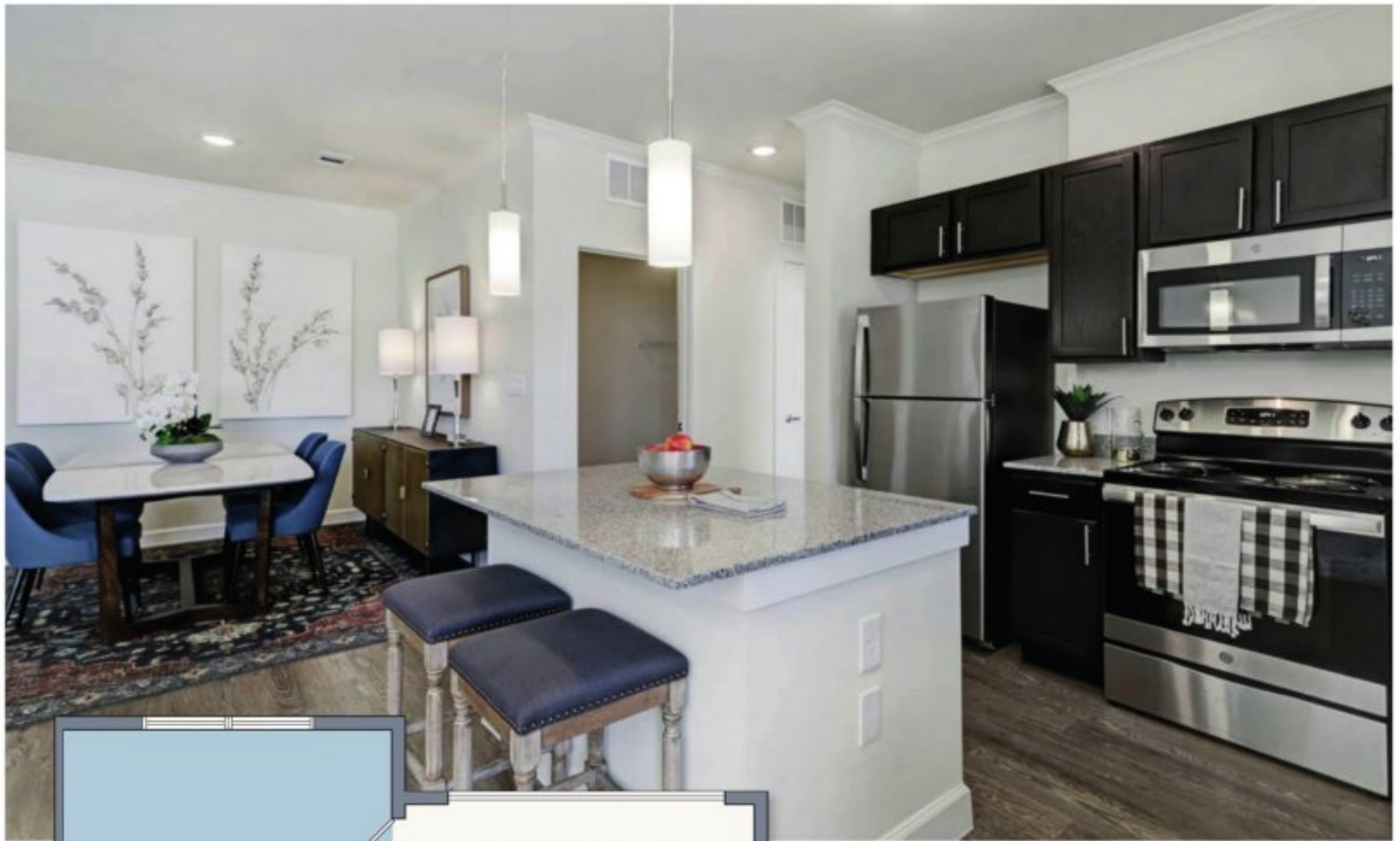
One Bedroom, One Bath
775 Sq. Ft.



A-1

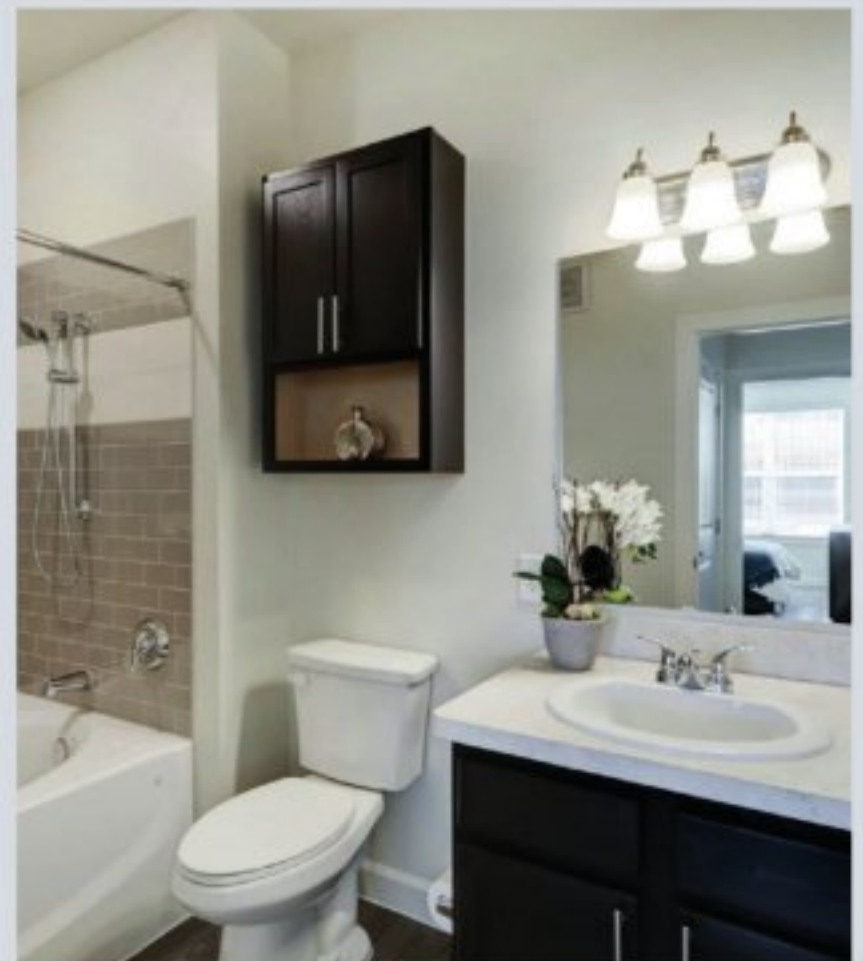
One Bedroom, One Bath
625 Sq. Ft.





A-3

One Bedroom, One Bath
850 Sq. Ft.



B-2

Two Bedroom, Two Bath
1,275 Sq. Ft.



B-3

Two Bedroom, Two Bath
1,433 Sq. Ft.

ASSISTED LIVING

Our Assisted Living residents can choose from various cozy living options, including studio, one-bedroom, and two-bedroom senior apartments. These well-planned living spaces are customized to offer the comfort you want and the privacy you should have. Each apartment has handy features like a kitchenette, a walk-in shower, and an emergency call pendant connecting you to our round-the-clock care team.

Outside your apartment, you'll discover a wide array of enriching amenities just a short walk away. These include a well-equipped movie theater, libraries, welcoming activity rooms, an on-site bistro, and a full-service beauty salon, all contributing to a lively social atmosphere. Our on-site wellness center is always available to offer rehabilitation services for assisted living residents as needed.

Our caring nursing team, consisting of Registered Nurses (RNs) and Licensed Vocational Nurses (LVNs), works closely with assisted living residents and their families to create personalized care plans that address specific needs and preferences. The more we know about our residents, the better we can customize our services and care to improve their well-being. If a resident's needs change over time, their personalized plan will change too, ensuring that the care they receive always matches their evolving requirements. You can trust that our highly trained nursing staff is always dedicated to providing dignified and respectful care, allowing you or your loved one to enjoy the comforts of home fully.





INCLUDED SERVICES

LIFESTYLE SERVICES

- Weekly Housekeeping & Laundry Services
- Your Choice Dining (3 Meals Daily)
- Scheduled Group and Private Transportation Available
- Activities Planned Daily
- Access to all Community Amenities and Services

PERSONAL SERVICES

- Maintenance-Free Living
- 24-HR Emergency Alert System
- On-Site Staff, 24-Hours a Day
- Personal Assistance Services
- Rehabilitation Services
- Medication Management
- Full Time Licensed Nurse

UNIT AMENITIES

- Full-size Refrigerator and Microwave
- Stainless Steel Sinks and Disposals
- All Utilities Included
- Private Patios or Courtyard Access
- Pet Friendly



FLOOR PLANS

Assisted Living



B-E
 One Bedroom, One Bath
 468 - 700 Sq. Ft.

A
 Studio
 365 Sq. Ft.





F

Two Bedroom, Two Bath
953 Sq. Ft.



*Alternative layouts are available, please contact us for more information.

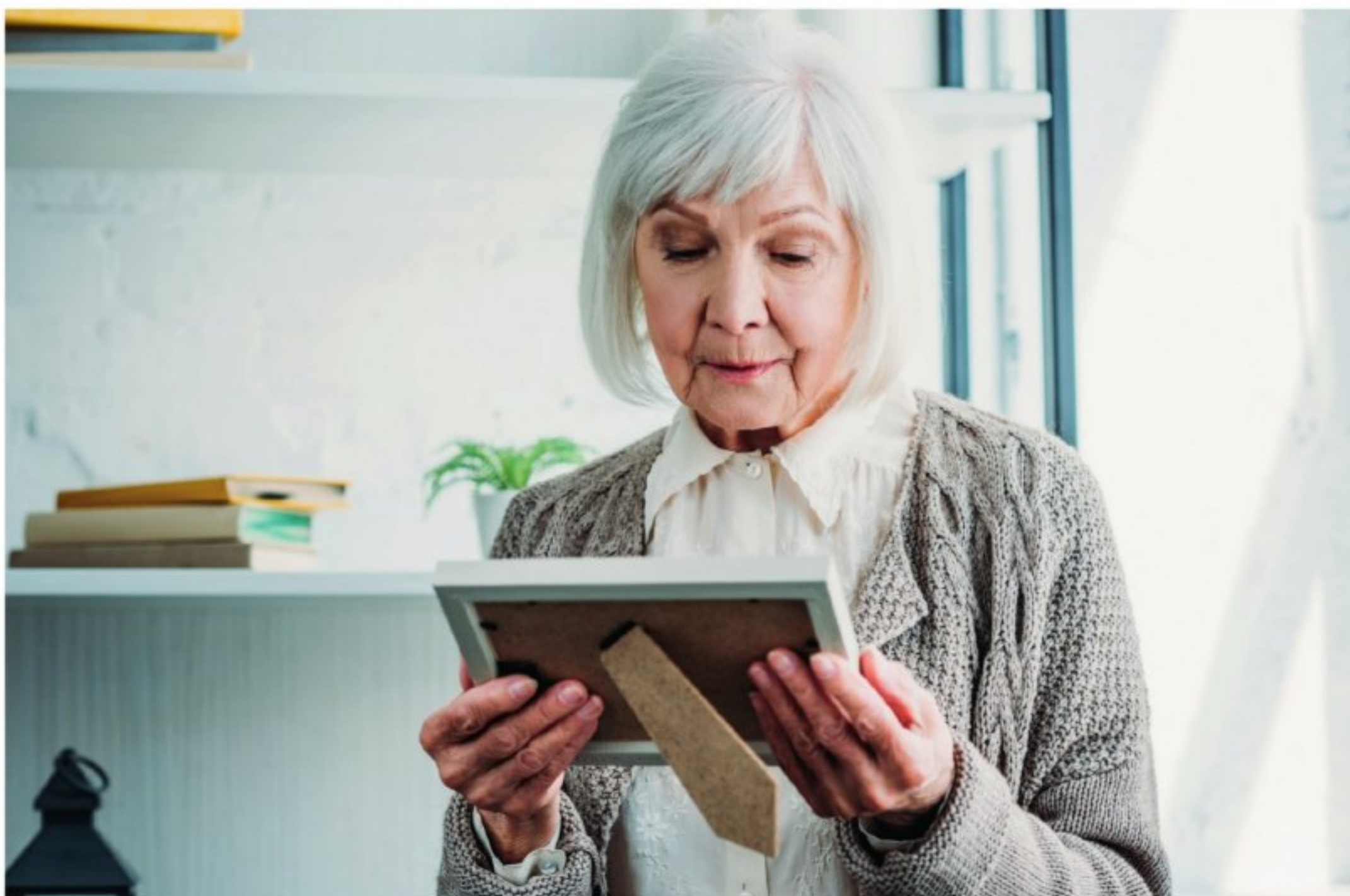
MEMORY CARE

For those living with the effects of a memory loss illness such as Alzheimer's or dementia, the benefits of a thoughtfully crafted community and around-the-clock support from Memory Care specialists can be life-changing. The Lodge at Pine Creek provides exceptional care and programs in a safe, comforting place for those with Alzheimer's and memory issues. Our neighborhood is designed to feel like home, helping residents keep their independence and self-esteem intact.

Residents can choose from various daily therapeutic and fun activities, such as music therapy, pet therapy, and sensory stimulation. Our personalized nutritional plans are tailored

to each individual's tastes and dietary needs. Residents can decide whether to eat privately or have meals delivered to their rooms when needed.

At The Lodge at Pine Creek Memory Care, we provide secure areas for wandering and exploration, all while maintaining structured daily routines to alleviate stress. We believe in striking a balance between structure and freedom of movement, empowering our residents to regain a sense of self. Our dedicated team is committed to delivering care, compassion, patience, and persistence as we assist each resident with their daily activities.





INCLUDED SERVICES

LIFESTYLE SERVICES

- Weekly Housekeeping & Laundry Services
- Your Choice Dining (3 Meals Daily)
- Valet Trash Service
- Transportation Services
- Memory-Focused Activities
- Common Spaces Designed for Socialization
- Beauty Salon and Barbershop

PERSONAL SERVICES

- Specialized Memory Care Services/ Programs
- 24-HR Emergency Alert System
- On-Site Staff, 24-Hours a Day
- Personal Assistance Services
- Rehabilitation & Respite Services
- Medication Management
- Full Time Licensed Nurse

UNIT AMENITIES

- All Utilities Included
- Courtyard Access

FLOOR PLANS

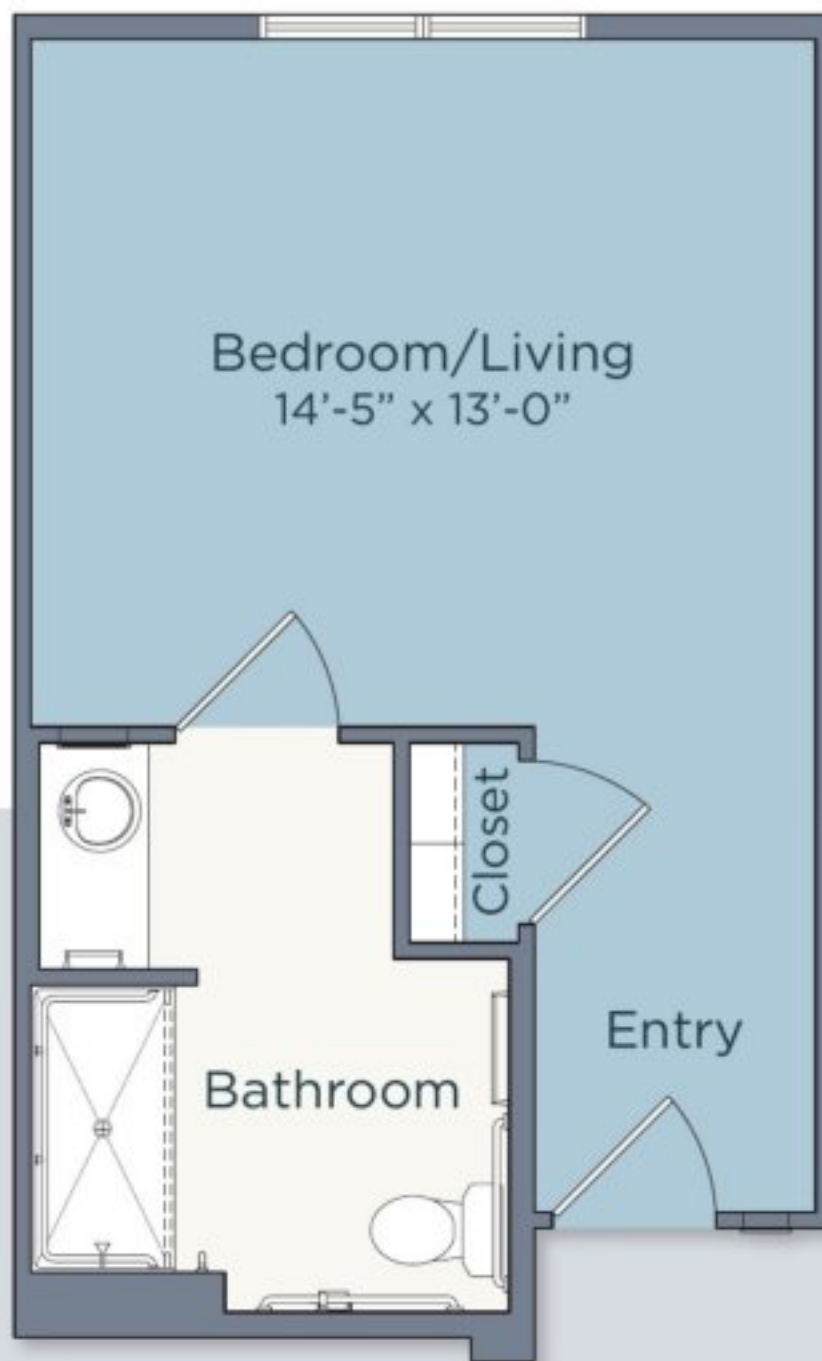
Memory Care





PRIVATE STUDIO

325 Sq. Ft.



PRIVATE DELUXE STUDIO

350 Sq. Ft.



EASING THE TRANSITION TO RETIREMENT

The transition to retirement can be difficult for many people. Most adults have been working 8 hours a day, 5 days a week, for 40 years or more! It makes sense that the sudden loss of that routine, income, and social support can sometimes be worrying. Here are some tips on easing the transition to retirement.

SWITCH TO PART-TIME FIRST

Many people find it easier to switch to part-time work or cut back on their hours before retiring entirely. For example, a full-time teacher could switch to a half-time position. If you own a company or business, it can be easier to step back slowly as you train others to take your place, giving them more and more responsibility over time. A longer, more incremental transition to retirement might be a gentler way to get used to a new routine.

MAKE PLANS AND GOALS

Career-focused people often wonder what they will “do with themselves” once they’ve retired. Get ahead of this anxiety by making plans for what you will do with your retirement, for example spending more time on hobbies and interests, with your family or travelling, or learning new things. Come up with plans and goals for what you want your life to look like after you’ve retired. This can make it a lot more fun and productive and give you something to look forward to rather than worry about.

EXPECT HIGHS AND LOWS

Even in retirement, you will have good days and bad days, so having realistic expectations can be very helpful. You’re likely to experience lots of conflicting emotions, such as excitement, loss, worry, boredom, joy, and many others. Sometimes you might experience all these feelings in one day. Let your emotions come and go and change as they will. Retirement is emotionally complicated, so allow for and embrace that complexity.

CREATE A BUDGET

Finances can be a major concern when retiring. Many retirees worry that they will outlive their retirement savings. Resolve these concerns by taking a comprehensive look at your finances, and budget accordingly. Your budget, income, and financial priorities may look very different after you’ve retired.

LOOK INTO YOUR HEALTHCARE COVERAGE

Many people experience an increase in health problems as they get older. Make sure you have sufficient healthcare coverage to meet your medical needs after you retire. Because your employer likely provided your healthcare coverage while you were working, you may need to find your own health insurance. Medicare and Medicaid might be available to you depending on your age and income. Now is the time to investigate these options, and make sure your medical needs will all be covered.



THE SIGNS IT'S TIME FOR CARE

Life is a beautiful journey, filled with experiences, memories, and cherished moments. However, as time marches on, there might come a point when the challenges of aging or declining health necessitate a shift towards specialized care.

RECOGNIZING THE SIGNS

The decision to move into a care facility is never easy, but certain signs might indicate that it's time to consider this change. Struggling with daily tasks such as dressing, bathing, or meal preparation can be a clear indication that additional support is needed. Unexplained weight loss, forgetfulness, and difficulty managing medications can also raise concerns about an individual's ability to live independently. Changes in hygiene habits, increased isolation, and safety concerns around the home are further indicators that it might be time to explore care options.

WHEN DOES SOMEONE NEED ASSISTED LIVING?

If your loved one is suffering and needs some oversight, it may be time to find an assisted living community that is staffed and equipped to meet their ongoing needs.

Here are some of the signs that will help make the decision if you are worried about a loved one living alone and being unable to properly care for themselves.

- Chronic health problems
- Recent falls
- Forgetting to take medication
- Isolation and sadness
- Poor eating habits
- Poor hygiene
- Unable to handle daily activities
- Wandering off
- Becoming aggressive
- Caregiver stress

WHEN DOES SOMEONE NEED MEMORY CARE?

Serious cognitive impairment, such as dementia and Alzheimer's, is more than simple memory loss. These conditions are among those that may show when it's time for considering Memory Care. According to the Mayo Clinic, some of the more serious changes that dementia patients exhibit include, Agitation, Anxiety, Depression, Hallucinations, and Paranoia

However, the following questions may help you decide if the time is right:

- Are you or your loved one becoming impatient, irritable, and stressed?
- Are you beyond your physical abilities in caring for your loved one?
- Are you having to neglect your work responsibilities, family, and yourself?
- Are you risking the health of your loved one, and/or yourself?
- Are you constantly worrying about a loved one's safety?

If you answer YES to most of the questions, then the time is right for you.

EMBRACING CHANGE

As life evolves, so do our needs. Transitioning to a care facility doesn't signify an end; rather, it's a new chapter that can offer safety, companionship, and specialized care. It's natural to feel a mix of emotions during this process - from nostalgia to uncertainty - but embracing change with compassion for yourself or your loved one is vital. Focus on the positive aspects that care facilities bring - a supportive community, expert medical attention, and opportunities for engagement.

EXPLORING CARE OPTIONS

When it comes to care, there is a spectrum of choices, each tailored to the individual's unique needs. Residential facilities, assisted living communities, and nursing homes offer varying levels of care and assistance. Residential facilities often provide a sense of community and help with day-to-day activities. Assisted living strikes a balance between independence and support, offering services like medication management and personal care. Nursing homes, on the other hand, offer comprehensive medical care and attention for those with more complex health needs.



ELDER CARE IN THE COMMUNITY

When it's time to consider a loved one requires senior living care, usually it is an urgent requirement to consider. If you are starting to look around, the different levels of care can be confusing. To help your searching and decision making, here is a breakdown of the senior living options that are available.

HOME HEALTH CARE

These are qualified health care workers that will come to a senior person's home or community to perform medical tasks, such as medication management, wound care, or physical therapy. Generally, an individual's doctor will send an order for service to a community home health group to come to a senior's location to perform the service, but scheduling is determined by the company, and the service cannot be customized.

HOME CARE

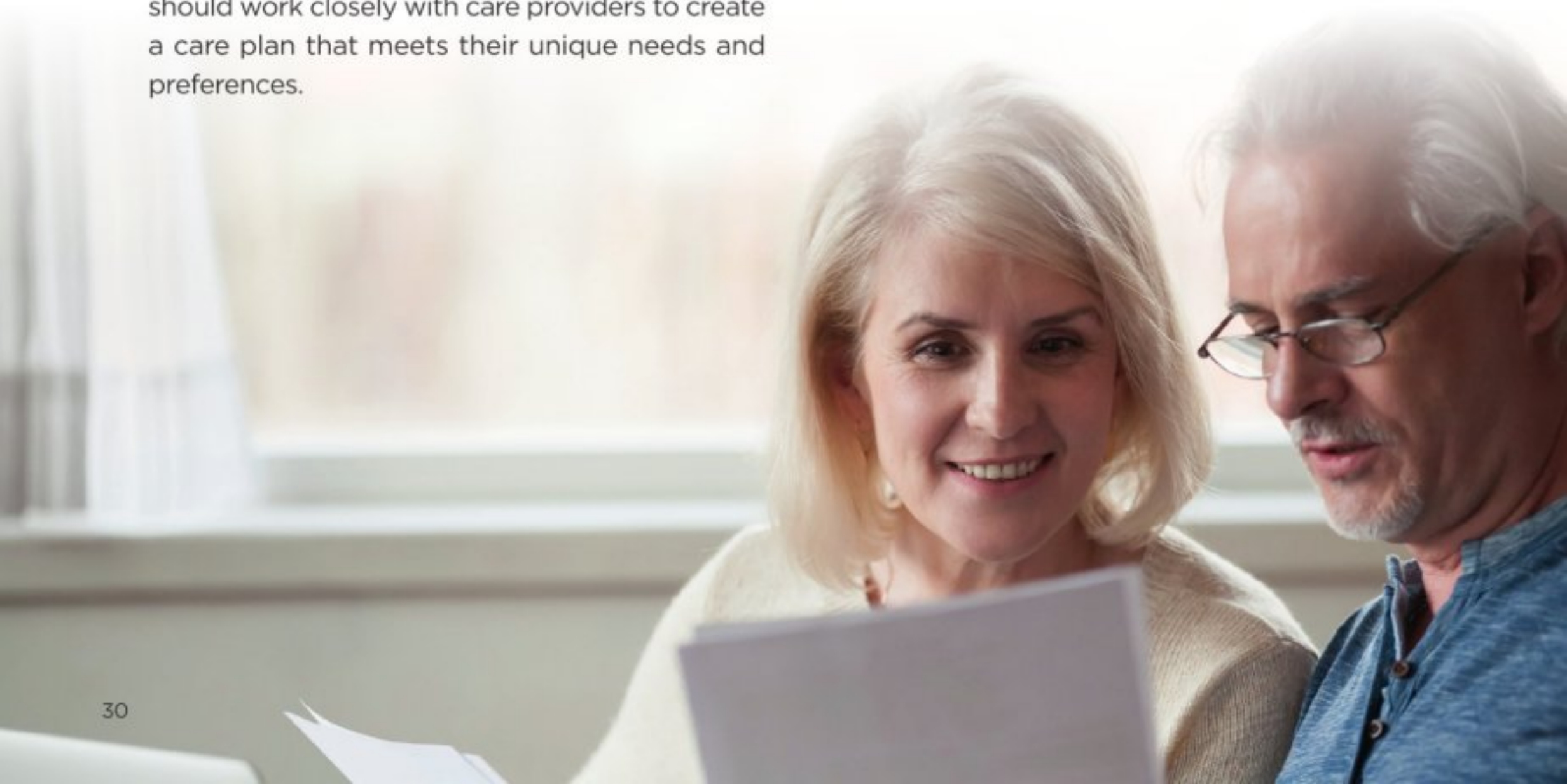
Home care services for seniors aim to enhance their quality of life, promote independence, and allow them to age in place while receiving the necessary support and companionship. Families and seniors should work closely with care providers to create a care plan that meets their unique needs and preferences.

INDEPENDENT LIVING

These communities and accommodation are for seniors aged 55 years or older. The accommodation is designed with independence in mind, with a small kitchen or kitchenette, depending on how many meals are offered, which usually is 1-3 meals per day. These communities offer scheduled transport and housekeeping in addition to activities and engagement events. If a person requires additional care, they can hire private care givers, but these do not offer any medication management or assistance with daily living. These communities are paid for using a private funding.

ASSISTED LIVING

These are communities that are for people aged 55 years of age or older. These communities are designed for seniors that need additional care that is not being met at home or an independent living setting. Assisted living communities provide housekeeping, laundry, 3 meals per day, scheduled transportation and activities and engagement.



Many assisted living facilities may partner with physical therapists, home health companies and hospices so residents can remain in the assisted living community without having to move location.

PERSONAL CARE HOMES

These communities and homes are licensed and regulated by the state. Many are residential homes, and some are multi-level communities that do not have a State License to be an Assisted Living. These communities provide services such as housekeeping, laundry and 3 meals per day. Most will provide 24/7 oversight, medication management and assistance with daily living. In some care homes they offer care for those living with dementia. Some care homes are approved by the state to have Medicaid programs to help with expenses; however, you must meet income requirements to be eligible.




PRN CARE & SERVICES

Established since 2015, we offer a unique blend of services that support senior wellness. We're your leading choice in senior care in Baytown and the Greater Houston area.

OUR SERVICES:

Senior Consultant
Wellness
Business-to-Business
Private Duty
Technology Education & Training

Contact us today for a free consultation!

 (409) 422-7393

 prncare93@gmail.com



SKILLED NURSING

This is for those seniors requiring 24/7 medically skilled supervised care. An elderly person can enter a nursing home and not be ambulatory. These facilities provide 3 meals per day and offer housekeeping and laundry service. Medicaid can often supplement the cost if an individual's income qualifies them for Medicaid. Long-term care insurance can be used in some of these facilities, do consult with your provider for the guidelines determined in your policy.

MEMORY CARE

A memory care community provides specialized services and amenities for those living with conditions that affect memory and behavior. The community is designed with comfort and safety in mind to ensure that residents are happy, secure, and inspired. These facilities have secure perimeters and a higher ratio of expert staff to make sure residents are cared for and listened to.